

[-- Back to Software](#)

Professional and Parent Software Resources

Item	Description	Photo	Price
<p>Single 1K User AS-ATP01</p> <p>1K Network AS-ATP-NT-01</p> <p>Other Options</p> <p>Details</p> <p>Program Sections</p>	<p>Assistive Technology Tracker Plus</p> <p>The new Assistive Technology Tracker Plus is a comprehensive database that allows agencies to track "points of contact" of services provided. It will help you track referrals, assessments, technical support, and equipment used by specific individuals. Reports can be generated to document any or all of these activities. AT Tracker is being used by AT providers, speech therapists, occupational therapists, physical therapists, & audiologists and in pupil appraisal. AT Tracker is now used by hundreds of agencies throughout the United States. This software was developed by a teacher and worker with 25 years of experience in assistive technology, honored by her state's assistive technology access network as having an outstanding assistive technology agency.</p> <p>Versions include tracking 1000, 5000, and 10000 individuals (each having the following options: single user and network versions. The 1K version also has an option for more than one, but unnetworked single station).</p> <p>Win 98, 2000, XP (Pro/Home)</p>	 <p>Details</p>	<p>1K Version 1st 1K User \$525.00</p> <p>1K Network Version \$1325.00</p> <p>Other Options</p>
<p>1 User IT-CH02</p> <p>5 Users IT-CH07</p> <p>Details</p> 	<p>ChooseIt! Maker 2 It's easy to create decision making activities</p> <p>It's easy to create decision-making activities with ChooseIt! Maker 2 . It is particularly useful for helping switch users learn to make choices using scanning techniques, as you can create lots of appropriate and interesting activities in finely graded steps of progression.</p> <p>Win 98-XP Pentium II, 64MB RAM, 60MB disk space, sound Mac OSX+ 128MB RAM, 14MB disk space</p>		<p>1 User \$109.00</p> <p>5 Users \$299.00</p>
<p>TF-2083</p> <p>Details</p>	<p>Dyscalculia Screener Special education</p> <p>Sometimes called number blindness, a condition that affects our ability to acquire arithmetic skills.</p> <p>Subtests cover 4 basic areas:</p> <ul style="list-style-type: none"> • Enumerating. • Understanding number size. • Understanding numerals. • Understanding simple arithmetic. <p>Windows</p>		<p>Network License \$399.95</p>

TF-20106

Dyslexia Screener Special Education

No Photo

Network License
\$399.95

As an initial diagnostic tool, it enables you to distinguish between poor reading ability and dyslexia, and gives advice on next steps.

Dyslexia Screener:

- Includes adaptive testing to give you rich and relevant information and provides standardized scores
- Provides instant scoring and analysis gives you immediate results
- Simple to administer and accessible to use
- Suitable for a wide range of pupils
- Designed by experts in dyslexia assessment and diagnosis.

System requirements

Win 98, 2000, or XP, Pentium 3, 128MB RAM, 120MB free disk space, sound card, Adobe Acrobat Reader (obtained from <http://www.adobe.com>), mouse.

Single 1K User
AS-ET01

Equipment Tracker Plus

Equipment Tracker is an easy-to-use database that enables any agency (school district and state or private organization) to keep track of any equipment owned and used by that agency. It has a built in "check in-check out" system and records all equipment repairs, maintenance, and disposal. Equipment Tracker is being used by many agencies throughout the United States. This software was developed by a teacher and worker with 25 years of experience in assistive technology, honored by her state's assistive technology access network as having an outstanding assistive technology agency. Versions include tracking 1000 individuals and 5000 individuals (each having the following options: single user, each additional station for a single user, and network version).

Win 98, 2000, XP (Pro/Home)



Details

1 1K User
\$450.00

1K Network
AS-ET-NT-01

Network
\$1250.00

Other Options

Details

Other Options

Package 1
OB w MSSpeech
GS-OBMS

Overboard

Communication Overlay and Board Designer

5 Options (each has 5500 Gus symbols):

- Package 1: Overboard design software with Microsoft Speech
- Package 2: Overboard design software with NeoSpeech
- Package 3: 5 pack of Overboard with NeoSpeech
- 10 pack of Overboard with NeoSpeech
- 25 pack of Overboard with NeoSpeech

System Requirements:

Windows 98-XP, 74 MB (version 2.2.0, 11/01/2005)

Mac OSX 10.3/10.4, 20 MB (version 2.13, 11/13/2005)

[Click here](#) to listen to difference between Microsoft Speech and Neospeech. Requires [Windows Media Player](#).

PACKAGE ONE

- 5,500+ Gus Symbols with
- "Overboard" design software

Only \$169

With Microsoft Speech

OVERBOARD TALK KING

Other Options

Package 1
OB w MSSpeech
\$169.00

Package 2
OB w NeoSpeech
\$199.00

Pkg 3 - 5 Pack
\$649.00

Other Options

Package 2
OB w NeoSpeech
GS-OBNS01

Package 2 x 5
GS-OBNS05

Package 2 x 10
GS-OBNS10

Package 2 x 25
GS-OBNS25

Details

1 Unit

Win SL-PITW
Mac SL-PITM

5 Units

Win SL-PITLW
Mac SL-PITLM

Details

Picture It v.4.2

Boost literacy and self-esteem!

Picture It version 4.2 is the easiest and fastest software one can use to add pictures to text. Create a picture-rich environment! Students struggling to understand print can have successful literacy experiences every day using picture-supported materials. Any curriculum can be adapted using Picture It, because materials can be presented at a level which the individual reader can understand. Spanish is a built in capability.

Accessibility:

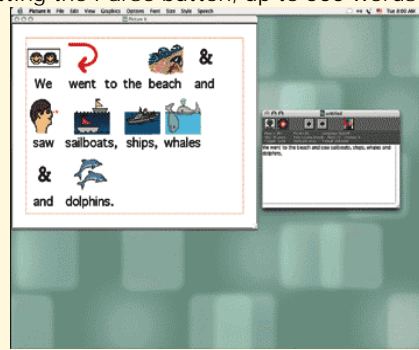
activate Reader mode with [switch](#), keyboard, touch screen, or mouse

Minimum System Requirements:

Win 98/ME/2000/XP

Mac Classic 8.6-9.2/OSX 10.1-10.4

Make a Picture It document by just typing in the text and hitting the Parse button, up to 500 words at once!



1 Unit

\$295.00
Win or Mac:

5 Units

\$1032.50
Win or Mac:

1 Unit

Win SL-PWW
Mac SL-PWM

5 Units

Win SL-PWLW
Mac SL-PWLM

Details

PixWriter

Boost literacy and self-esteem!

- User selects a button, the word and picture appear, and the computer speaks!
- Making Vocabulary Setups is Easy - Just Type!
- 16, 36, and 64 Button Setups.
- Choose Voices, Rates, Pronunciations.
- Over 3000 Literacy Support Symbols and the Ability to - Import Photos and other Clip Art.
- Save and Print documents.

Accessibility: Use adapted [keyboard](#), [mouse](#), TouchWindow, and single- [switch](#) scanning!

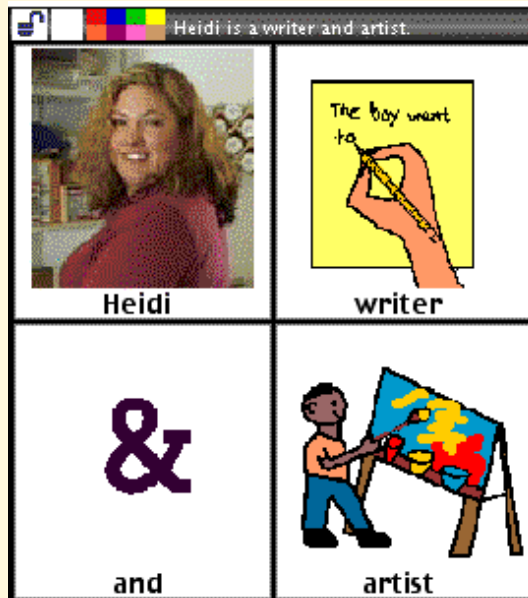
- Includes manual

Minimum System Requirements:

Win 98/ME/2000/XP

Mac Classic 8.6-9.2/OSX 10.1-10.4

Personalize Pix Writer



1 Unit

\$199.00

5 Units

\$700.00

Standards Support

Support Products

Simply Science
Read and Tell

Bundles

1 User

IT-SJ03

5 Users

IT-SJ08

Details

Bundles



SwitchIt! Jigsaw Maker 2

Convert your own photographs or other computer images into on-screen jigsaw puzzles.

Turn your own photographs or computer images into on-screen jigsaws! Pictures can be cut into 2, 4, or 9 piece puzzles. The jigsaws can be completed in 4 ways, providing activities with a finely graded progression in skill level. It is designed with ease of use in mind to ensure that you can concentrate on teaching rather than computing, including a number of ready-made activities to get you started.

Accessibility:

Use a [switch](#), mouse, or [touch screen](#) and can be configured to suit the needs of each user.

Win 95-XP Mac Classic



1 User

\$109.00

5 Users

\$299.00

1 User
IT-SQ02

SwitchIt! Maker 2

SwitchIt! Maker 2 will turn your text, images, movies and sounds into simple on-screen activities that are automatically accessible using a mouse, whiteboard, touch monitor, keyboard or switches. Make talking books starring your pupils, or a slide show of a recent trip. Put that digital camera to good use! Especially designed so that children can make activities as part of a lesson. Operated with 1 or 2 switches, mouse, IntelliKeys, or touchscreen.

5 Users
IT-SQ07

[Details](#)



Win 98-XP Mac OSX



[Details](#)

1 User
\$109.00

1 User
\$299.00

TF-2171

[Details](#)

[Research](#)

Test Factory - Elementary School Grades 3-5, Win

Test Factory is a formative testing service developed for the MSA in the state of Maryland. Students login at <http://www.testfactory.net> and practice taking standardized test questions, designed around the state's mathematics standards. Fully research-based, the Test Factory service has been shown to raise student pass rates by 10%-15% and more. Some of the highest improvements have been registered by special education and under-achieving students.

Related Products

[Test Factory - Middle School](#)

[Test Factory - High School](#)



[Details](#)

Network License
\$999.00

TF-2173

[Details](#)

[Research](#)

Test Factory - High School Grades 9-13+, Win

Test Factory is a formative testing service developed for the MSA in the state of Maryland. Students login at <http://www.testfactory.net> and practice taking standardized test questions, designed around the state's mathematics standards. Fully research-based, the Test Factory service has been shown to raise student pass rates by 10%-15% and more. Some of the highest improvements have been registered by special education and under-achieving students.

Related Products

[Test Factory - Elementary School](#)

[Test Factory - Middle School](#)



[Details](#)

Network License
\$2999.00

TF-2172

[Details](#)

[Research](#)

Test Factory - Middle School Grades 6-8, Win

Test Factory is a formative testing service developed for the MSA in the state of Maryland. Students login at <http://www.testfactory.net> and practice taking standardized test questions, designed around the state's mathematics standards. Fully research-based, the Test Factory service has been shown to raise student pass rates by 10%-15% and more. Some of the highest improvements have been registered by special education and under-achieving students.

Related Products

[Test Factory - Elementary School](#)

[Test Factory - Middle School](#)



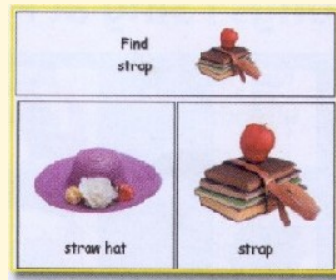
[Details](#)

Network License
\$1999.00

[Details](#)

This authoring program can revolutionize what we know about what students have learned. How many times have we said, "I know he knows that information. I know he does. He just can't tell me." Test Me, Score Me can solve this dilemma. Create tests with yes/no or multiple-choice answers. Use pictures, movies, text and speech. Use items that are familiar to the student, or use new items to check for generalization. Set up the questions, ask them, and then let the computer keep score of the answers.

256MB RAM Win ME/2000/XP Mac OS8.1-9.2/
OSX

[Programs Supported](#)[Programs Supported](#)

Using PayPal a problem? Fax your purchase order to 830-608-0882.

For discount on shipping multiple items call 877-608-9812.

[Link to calculate shipping for P.O.'s](#)

[Shipping outside the continental United States](#) requires [email contact](#) prior to purchase.

Prices subject to change without notice.

Turning Point Therapy & Technology,
Inc.
PO Box 310945
New Braunfels, TX 78131-0945

Member of Assistive Technology Industry
Association

[Contact Us](#)

Toll Free: 877-608-9812

Phone//Fax: 830-608-9812//830-608-0882

Support: support@turningpointtechnology.com

Sales: sales@turningpointtechnology.com

Website: webmaster@turningpointtechnology.com

Since 11/24/98

