

Big Keys *Plus*

Big Keys ...

Plus Punctuation Keys

Plus Arithmetic Keys

Plus Function Keys

Plus ABC Layout

Plus QWERTY Layout

... with KeyStar Technology

INFORMATION FOR THE USER

CONNECTION SUGGESTIONS

To connect the keyboard to the computer, simply unplug the existing keyboard and plug in the Big Keys *Plus* keyboard. Please note that in order to connect your keyboard to a larger (AT type) plug on your computer, you will also need the AT adapter plug that is supplied with your Big Keys *Plus* keyboard.

For ease in alternately connecting your standard keyboard or your Big Keys *Plus* keyboard, it is suggested that you use a keyboard extension cable. In this way, either keyboard can be plugged into the computer without having to reach around to the back of the computer.

BIG KEY *PLUS* ACCESSORIES

DUAL KEYBOARD ADAPTER

ULTRAFLEX SOFT PROTECTIVE KEYBOARD SKIN

RIGID PLASTIC KEYGUARD

KEYSET - BLACK ON WHITE OR MULTI-COLORED

KEYSET - LOWER CASE COLOR

PLUS FEATURES

PUNCTUATION



Shift

Punctuation marks are easily accessed by holding down the "Shift-Space" bar and pressing the desired punctuation mark indicated in red on the upper row of keys and the arrow keys.

BACKSPACE



Shift

Hold down the "Shift-Space" bar and press the left arrow key for Backspace

FUNCTION KEYS



This Plus feature lets you access the Function keys F1 - F10. Simply hold down the F key and the numeric row becomes F1 through F10.

NO RUN-ON FEATURE

Only one keystroke is sent to the computer for each key depression, sent on release. This feature prevents multiple characters that might occur inadvertently when holding down a key for long periods. *Note that using BigKeys Plus with a USB adapter may interfere with this feature!*

CAPS LOCK FEATURE

As an alternative to holding down the "Shift-Space" bar, the CAPS LOCK key will lock in all shift (red) options as well as upper case.

ABOUT THE COLORED ABC KEYBOARD

Big Keys *Plus* is designed so that children will have fun using both educational computer programs and games. No longer will they have to hunt for a letter on a strange array of keys with strange symbols. The big keys are perfect for small fingers, and the alphabetic arrangement with vowels all in the color yellow, "R" in red, "G" in green, etc., will accelerate their automatic recognition of letters, and their progress in learning to read.

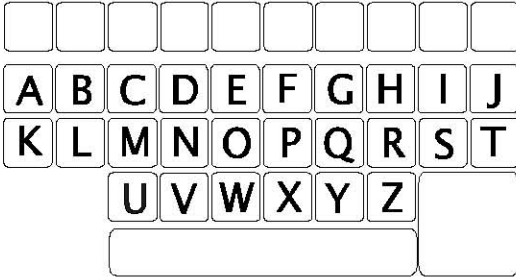
For even the youngest users, the large keys with large letters will make it easy to type and interact with the computer.

Included on Big Keys *Plus* are 6 of the standard keys: **Caps Lock**, **Ctrl**, **Alt**, **Tab**, **Del**, and **Esc**, for use by adults.

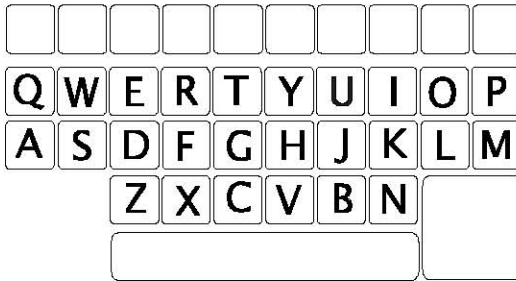
ABC - QWERTY OPTION

Your Big Keys *Plus* keyboard offers either ABC or QWERTY layouts.

ABC Layout



QWERTY Layout



To switch between layouts, the switch on the left, in the bottom of the keyboard, should be moved, with a pencil tip, toward the lower edge of the keyboard for QWERTY or towards the upper edge for ABC.

(Although the letters on the keycaps will remain the same, the computer will interpret all keystrokes as coming from the alternate keyboard layout.)

For instructions on how to remove keycaps see our web page.

